

## HD SERIES - SPECIFICATION DATA SHEET 1.1



### Kirk Key Interlock Company

9048 Meridian Circle NW, North Canton, OH 44720

Phone: 234.209.9301 • Fax: 330.497.4400 • Toll Free: 800.438.2442

Website: [www.kirkkey.com](http://www.kirkkey.com) Email: [sales@kirkkey.com](mailto:sales@kirkkey.com)

### Type F - Flat Mounted



The Type F interlock is generally flat or face mounted with bolts through the front of the housing. Many breaker, switch and T/R manufacturers offer provisions for mounting Type F interlocks.

All components of the HD Series Type F interlock are made from electropolished 316 stainless steel. The locking bolt is 5/8" diameter and the throw, or travel, of the locking bolt is 3/4". Lock bolt movement is completely controlled by the rotation of the key (or keys in multicylinder interlocks).

#### OPTIONS

**Locking Bolt Length** – When ordering, specify the length of the locking bolt in the withdrawn position. Standard lengths are 0", 1/4", 3/8", 1/2", 3/4", 1", 2", and 3". Non-standard lengths are also available (1" lock bolt shown on drawing).

**Key Removable** - the key(s) is removable when the locking bolt is either in the extended (E) or withdrawn (W) position. Please choose E or W when ordering an interlock. NOTE: Key removable extended is the most common because the locking bolt is typically extended to block/engage something.

**Multi-Cylinder** - up to 3 cylinders available. Please specify E or W key removable position for each cylinder. NOTE: On HD Series Type F interlocks, "W" cylinders will be located nearest the locking bolt.

- **Stamp Key Interchange** - specify an alphanumeric code to be stamped on the cylinder face and the key (e.g. A1, A2, B1, etc. - up to 5 characters). See HD Series Data Sheet for Keys (3.4) and Terminology (4.1) for details.
- **Auxiliary Switches** - see HD Series Data Sheets for Type Thermoplastic (2.3) and Type S (2.4) for details.
- **Protective Covers** - see HD Series Data Sheet for Protective Covers (3.1) for details.
- **Mounting Bolts** - see HD Series Data Sheet for Mounting Bolts (3.2) for details.
- **"Opposite Hand"** - see HD Series Data Sheet for Terminology (4.1) for details.

# HD SERIES - SPECIFICATION DATA SHEET 1.1



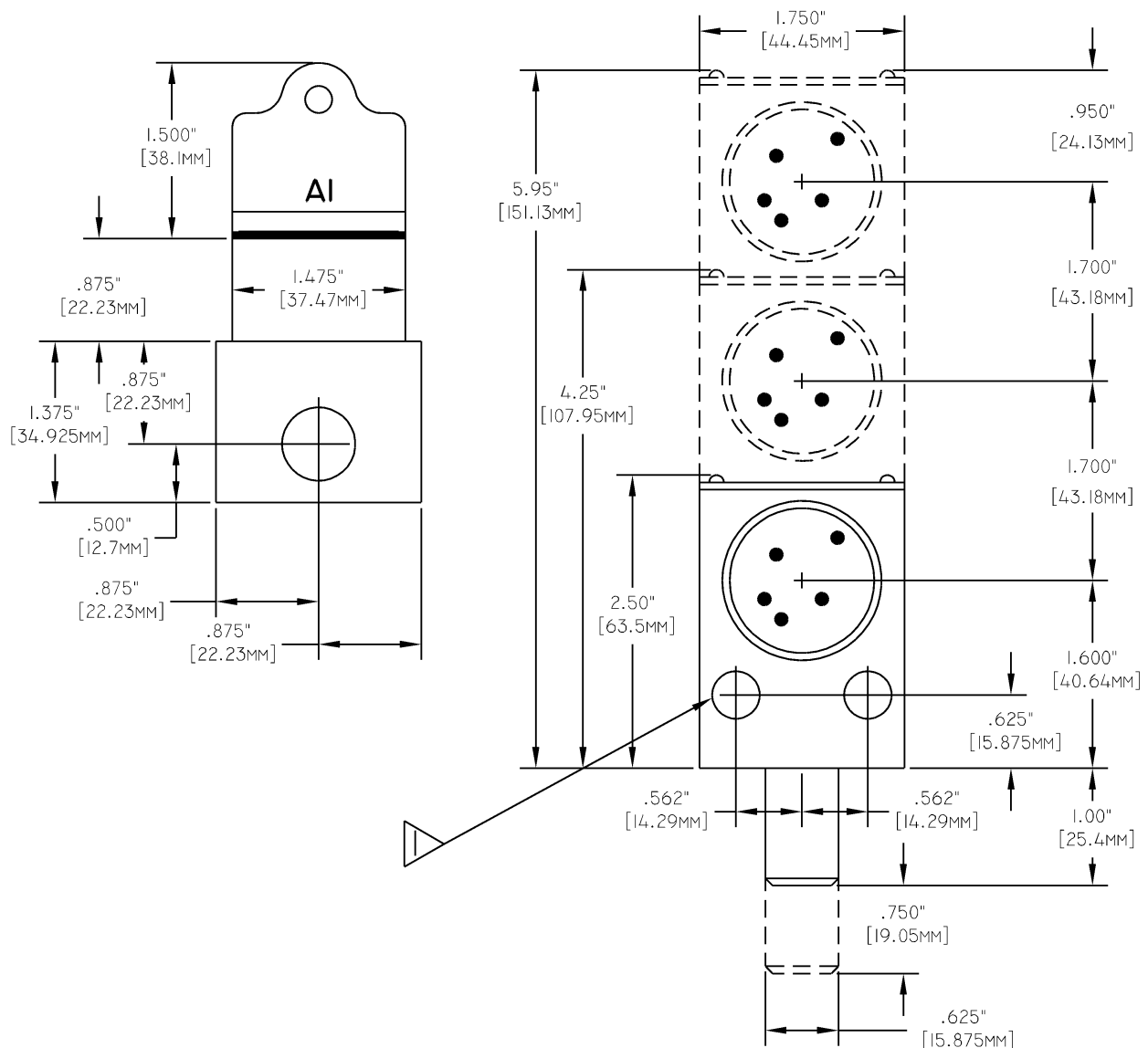
## Kirk Key Interlock Company

9048 Meridian Circle NW, North Canton, OH 44720

Phone: 234.209.9301 • Fax: 330.497.4400 • Toll Free: 800.438.2442

Website: [www.kirkkey.com](http://www.kirkkey.com) Email: [sales@kirkkey.com](mailto:sales@kirkkey.com)

## Type F - Flat Mounted



### NOTES:

1) 0.4062" (10.32mm) holes for mounting bolts (2 holes).